



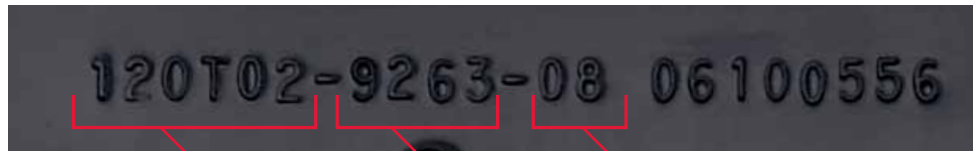
THE POWER WITHIN™



MODEL NUMBER

LOCATING YOUR BRIGGS & STRATTON ENGINE MODEL NUMBER

Knowing the model number of your Briggs & Stratton engine will make it easy to order maintenance or repair parts either online or from your local dealer. The engine model number is generally a number **stamped into metal directly on your engine**. Some push mower engines come with a cover or "shroud". It should be noted that these covers come in a variety of colors, sizes and shapes. Regardless of your cover the engine **model number will be in one of 3 locations**. Following is an example of what the engine model number looks like:



Enter Model - Enter Type - Enter Trim

Type or write in your engine model here as a handy, future reference.

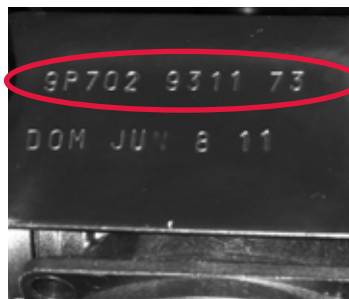
Enter your number online at BRIGGSandSTRATTON.COM/MODELNUMBER

WHERE TO LOCATE YOUR ENGINE MODEL:



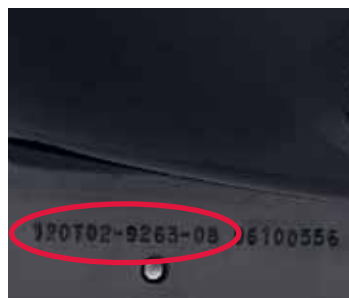
Above the spark plug

- Tools you may need:
- Flashlight
 - 1/4" or 5/16" socket or screwdriver



On the front of engine

Stamped on metal plate in between the overhead valve cover (OHV) and the air filter.



Above the muffler

Stamped on the sheet metal above the muffler, which can be on the right or left side of the engine.

BRIGGSandSTRATTON.COM

414.259.5333